

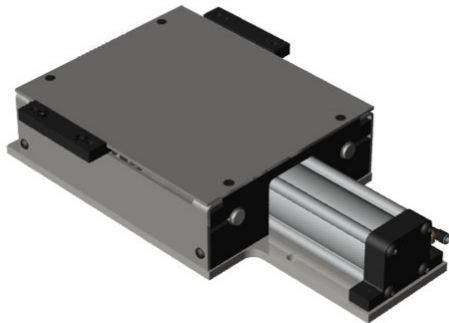


Wardcraft Conveyor



When a beltless conveyor is required...

Computer controlled, multi-speed shaker conveyor system, made in the U.S.A.



Tray-vayor 2 Description

Patent Pending

The Versatility of Air, the Reliability of Electronic Control

There are several "shakers" or "transporters" on the market. This one has been designed specifically with the user in mind. Not only is it simple to operate, but it is also easy to maintain. Picking the operating speed is as simple as twisting a dial, conveying speed is infinitely variable between 20 and 40 feet per minute. All speeds will operate at any air pressure setting between 30 and 60 PSIG. The pressure setting you select will depend on the total weight of the trays you will be using and the material that you will be moving. For best operating economy, always set the air pressure at the lowest value that provides the motion you require.

Separate Operating Module and Controls

To make this system easy to maintain, the controls were separated from the operating module. In order to work on the module, simply unplug the air lines, and take the module to your bench where disassembly and reassembly are a snap. The controls need not be touched. Any

mechanical work can be done quickly, or just plug in a new module and work on the other as time permits. This also reduces replacement cost, as either element can be purchased separately as required. As an added value, the control has an option that allows it to run two operating modules when required for larger presses or two directions of travel.

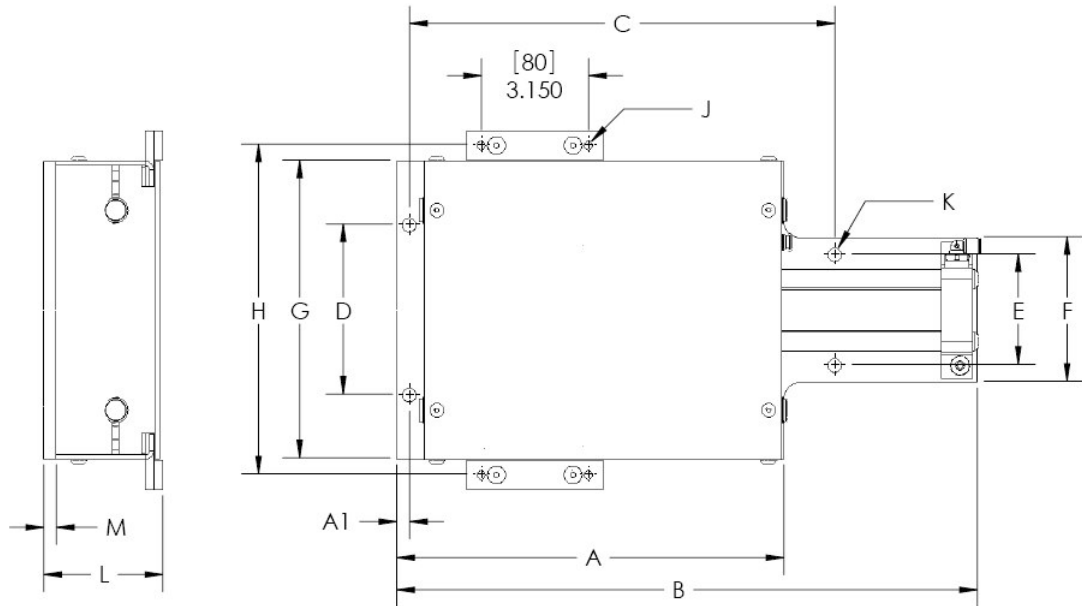
Complete Versatility

Pick your speed, pick your pressure setting and pick your conveying direction. There is nothing else to reset or recalibrate. Each operating module can drive its own tray or it can be fitted with a multi-tray system to match your application. Optional hardware is available to satisfy any of your requirements.

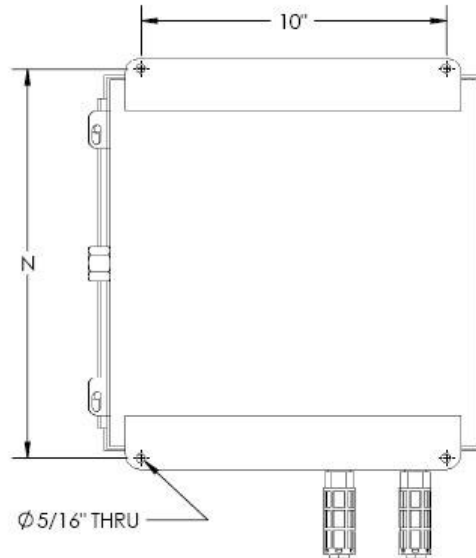
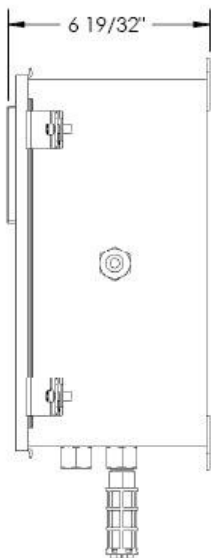
Extended Warranty

All components, except wear items, are covered by 3-year warranty when Wardcraft air prep package is used. (See warranty for complete description of what is covered).

Tray-vayor 2 Dimensional drawing



Model	A	A1	B	C	D	E	F	G	H	J	K	L	M	N
TV75	11.38	0.375	17.06	12.50	5.00	3.25	4.25	8.75	9.69	1/4-20	.406	3.50	.38	12.75
TV200	13.50	0.375	17.63	15.13	8.00	5.25	6.25	10.50	11.13	5/16-18	.406	5.38	.5	14.75



System information:

Voltage: 110 VAC 1 Ph. 60 Hz.

Lubrication: None required

Conveying speed: 10-35 F.P.M.

Max. Load @ 60 P.S.I.

(Including trays, cross bar, etc.)

TV75: 150 Lbs.

TV200: 300 Lbs.

Control panel mounting dimensions



Wardcraft Conveyors

One Wardcraft Drive, Spring Arbor, Michigan 49283-9757

TEL: (517) 750-9100 FAX: (517) 750-2244 (800) 782-2779

<http://www.wardcraftconveyor.com>